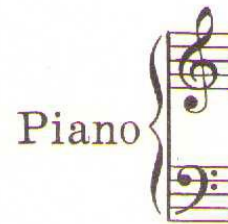


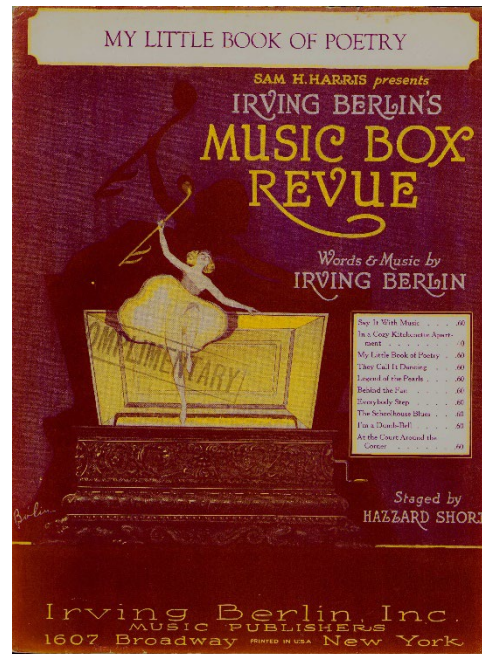
SHEET MUSIC TERMINOLOGY (DEFINITIONS)

<p>Artist’s Copy – Sheet music marked “Artist’s Copy” or “Advance Artist Copy” with no cover or a generic cover, given directly to soloists to promote a song</p>	
<p>Chart - Music for a particular instrument from a big band score</p>	

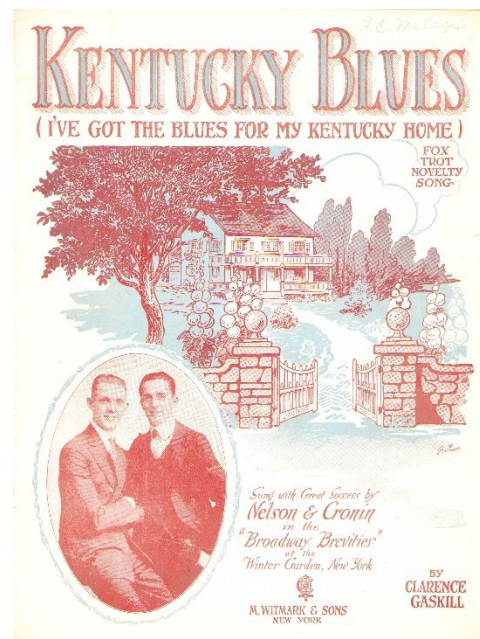
Clef - a symbol placed at the beginning of a staff to indicate the pitch of the notes written on it. The most common clefs are treble (G Clef), bass (F Clef), Alto (C Clef) and tenor (also C Clef),



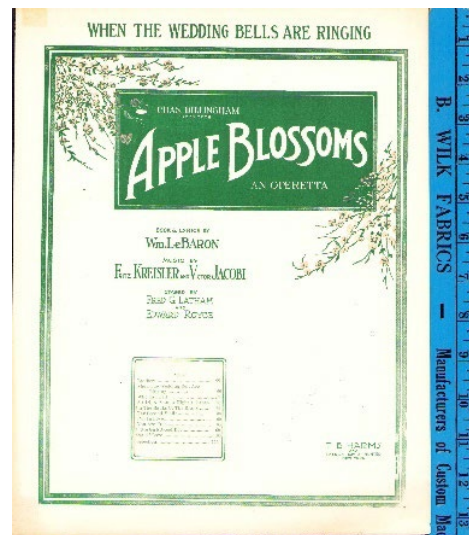
Complimentary Copy - Stamped “Complimentary” to indicate it was not purchased but given free. (Look below the dancer)



Interpolation – a song that’s added to a show after opening night; or, more loosely, any song from the show that states it was “in” the show but does not have a show cover.

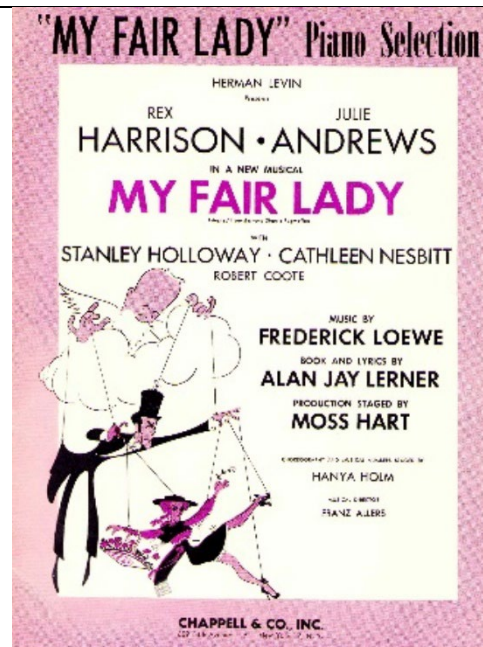


Large Format - Published roughly before 1919 that is approximately 10.5" x 13.5



“Operatic Edition” - A more classical, technically demanding arrangement—aimed at trained singers.

Piano Selection (often just “Selection”)– Selected songs from the show published for piano only, with no lyrics.



Piano/Vocal Format - Staff with melody line for voice, with lyrics, and treble and bass staff for piano, often with notation for guitar chords above the melody staff.

The image shows a musical score for a song. It features a vocal line on a treble clef staff with lyrics: "Well here's your des-ti - na-tion, your lit-tle white gate, Good - night, sweet-". Above the vocal line are guitar chord diagrams for G, Am, D7, G, and D7. Below the vocal line are piano accompaniment staves, including a treble clef staff with a melodic line and a bass clef staff with a bass line. The piano part is marked with a dynamic of *mp*.

“Pop Edition” - A simplified, commercial, radio-friendly arrangement.

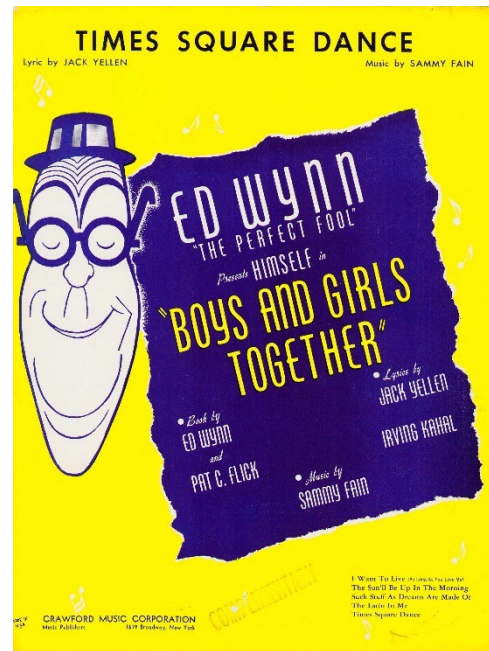
<p>Professional Copy - Marked “Professional Copy”, sometimes with no cover, given to professional musicians, without charge.</p>	<p>The image shows the cover of a sheet music book titled "CHICK-A-PEN" by MEREDITH WILLSON. The cover features a blue illustration of a woman in a long dress and hat, holding a large wooden spoon. The title "CHICK-A-PEN" is in large red letters. Below the illustration, it says "THE UNSINKABLE MOLLY BROWN" in blue and red. The cover also lists the composer Meredith Willson, lyricist Richard Morris, and arranger Dore Schary. It mentions the performers Tammy Grimes and Harve Presnell. The cover is marked "PROFESSIONAL COPY NOT FOR SALE" and "FRANK MUSIC CORP. - BIRMINGHAM CORPORATION".</p>
---	--

Selection (see Piano Selection)

<p>Show Cover - At least two covers from the same show that are identical except for the title of the song and the song list</p>	<p>The image shows two identical show covers for "THE PASSING SHOW OF 1912". The covers are for "THE BACCHANAL RAG" and "CARNEGIE" by LOUIS A. HIRSCH. Each cover features a central illustration of a woman in a white dress, surrounded by decorative elements and the text "AS INTRODUCED IN THE GREAT WINTER GARDEN SUCCESS 'THE PASSING SHOW OF 1912'".</p>
---	--

“Show Version” - The arrangement closest to what was used in the actual Broadway production.

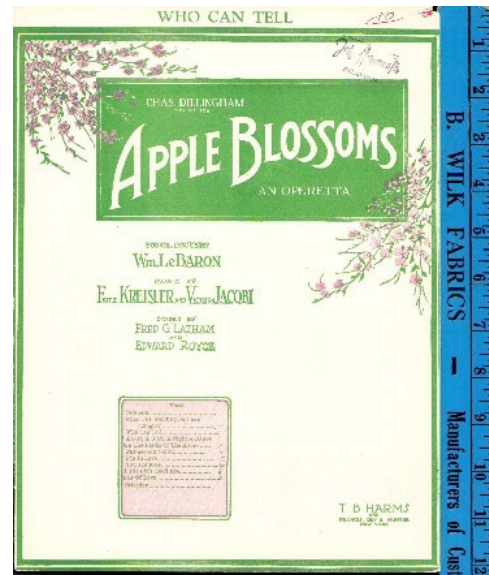
Song List -The list of songs from the show on a Show Cover. (Look at lower right corner)



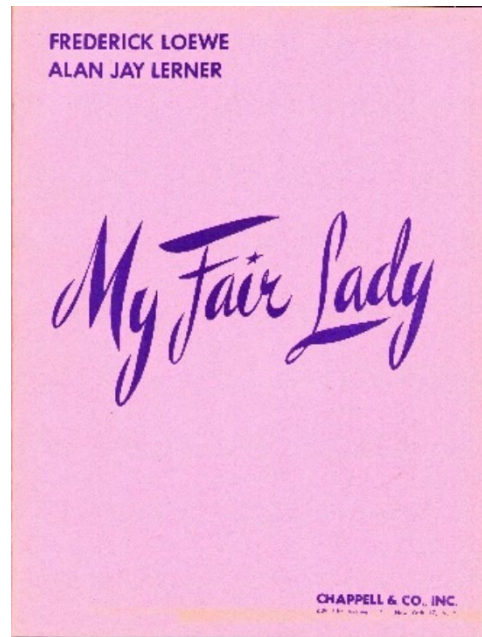
Staff - a set of five horizontal lines and four spaces that run across a page. Each line and space represents a different musical pitch.



Standard Size - Published roughly from 1919 forward that is 9" x 12". [Note that this show, *Apple Blossoms* (1919), published music in both Large Format and Standard Size.]



Vocal Score (a/k/a Piano Vocal Score) -The full score of a show with melody, lyrics, and piano parts



Vocal Selection(s) - A selection of songs from a show for voice and piano (in piano/vocal format).

